



# Watershed Trivia

Welcome!



*Special thank you to the City of Santa Cruz  
for sponsoring this event!*



# Pledge to reduce your use of single- use plastics!

Those that sign the pledge will receive an email from SOS with tips on how to turn their pledge into reality.

Sign the pledge at: <https://forms.gle/PcygEi8XpfV4Tk8s8>

Link will be dropped into the chat.





# Sign the SOS Plastic Bottle Ban Petition!

Help us put an end to single-use plastic bottles and protect our  
Monterey Bay!

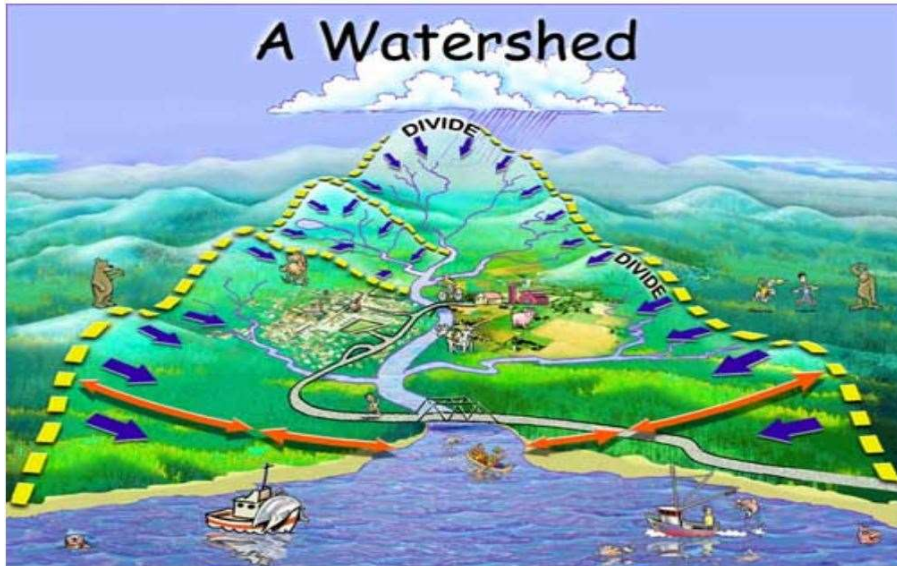
<https://saveourshores.org/plastic-bottle-petition/>





# True or False

A watershed is an area of land that channels rainfall and snowmelt to creeks, streams, and rivers, and eventually to outflow points such as reservoirs, bays, and the ocean.



- A **watershed** is defined as an area of land that channels rainfall and snowmelt to creeks, streams, and rivers, and eventually to **outflow points** such as reservoirs, bays, and the ocean.
- Also referred to as drainage basins or catchments.



# Yes or No

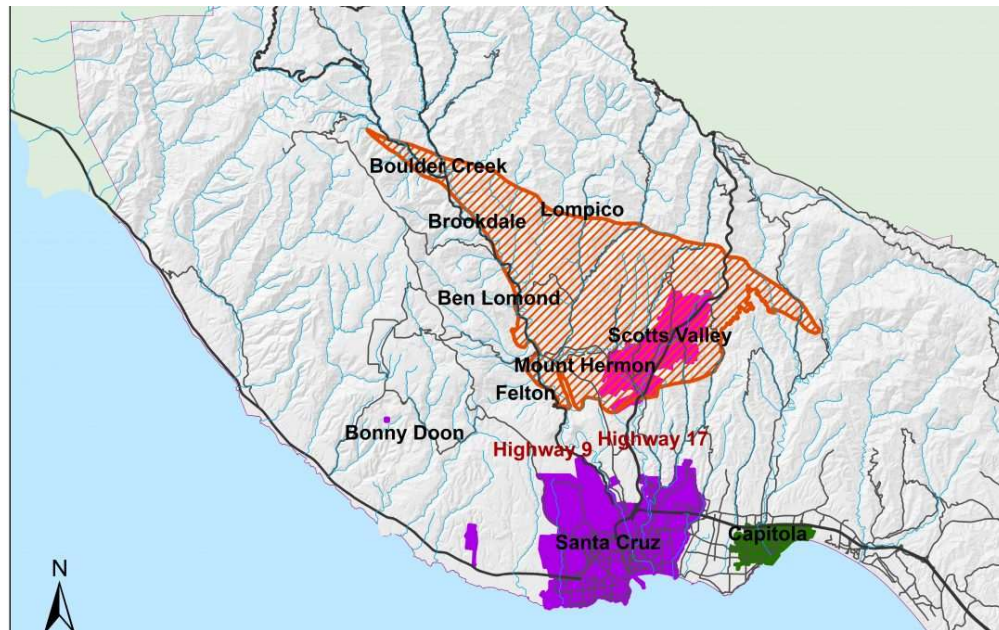
Does a watershed include the groundwater below it?





# Yes

- In the City of Santa Cruz the groundwater basin is called the Santa Margarita Basin.
- Much of the water in our rivers during the dry season come from our groundwater basins.





# True or False

A tributary is the largest river in a watershed that connects to the outflow point.







SAVE OUR  
SHORES

# False



- A tributary is a river, creek, or stream that feeds into a larger river or lake.
- A tributary never connects directly to the outflow point.



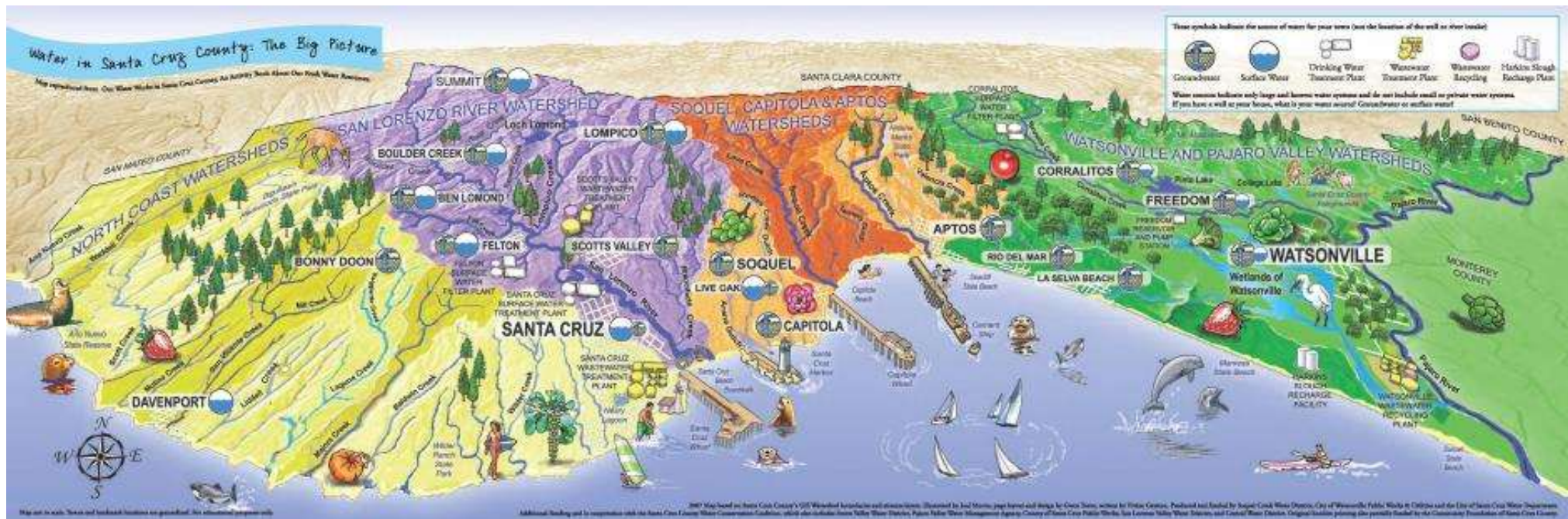


# What is the outflow point for all the watersheds in Santa Cruz County?





# The Monterey Bay National Marine Sanctuary!







# What endangered species of salmon historically spawned in the San Lorenzo River?





# Coho salmon



- Coho are anadromous fishes, meaning they spend part of their life in freshwater and part of their life in saltwater.
- Today, Coho salmon are rare in the SLR. Their last stronghold on the central coast is up in Scott Creek.





# Multiple Choice

How many miles long is the San Lorenzo River?

A. 17

B. 29

C. 53



# B: 29 miles

- The SLR travels from the Santa Cruz mountains, all the way down through the city of SC, and out to the ocean.
- The headwaters of the SLR are located near Castle Rock State Park (elevation: ~2,500ft)



# Name That Species







# Pacific Lamprey



- Pacific Lamprey are native to the San Lorenzo River.
- Adults are parasitic, attaching and feeding on other fishes.
- Are listed as a species of special concern.



# True or False

Most of the trash and pollution that enters the MBNMS comes from land.





# True

- 80% of all marine debris comes from land.
- Trash travels through our watershed by rain and wind, going into our storm drains, creeks, and rivers which all lead to the ocean!





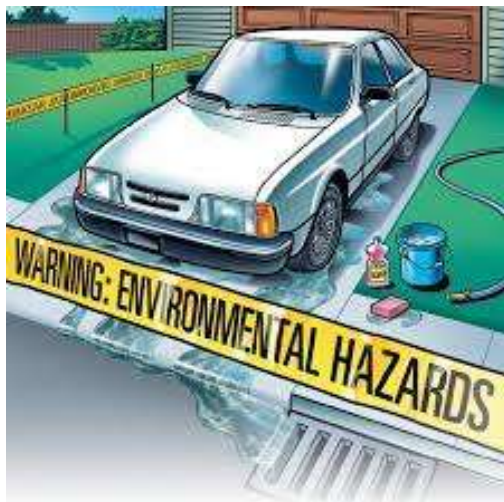
# Multiple Choice

Which of these is an example of common pollution impacting our watershed?

- A. Animal feces
- B. Soap from washing a car
- C. Fertilizers used in landscaping
- D. All of the above



# D: All of the above



- Animal feces can carry harmful bacteria and parasites that impact marine life.
- Soap and fertilizers contain phosphates that can cause algae to bloom, impacting water quality.





# Bonus Question!

What is the largest watershed  
in the United States?







# Mississippi River Watershed



- Fourth largest watershed in the world.
- Ranges from the Rockies in the west, Canada in the north, and all the way to the Appalachians in the east.
- Outflow point is the Gulf of Mexico.



While we tally the results there is still time to sign the pledge!

# Pledge to reduce your use of single-use plastics!

Those that sign the pledge will receive an email from SOS with tips on how to turn their pledge into reality.

Sign the pledge at: <https://forms.gle/PcygEi8XpfV4Tk8s8>

Link will be dropped into the chat.







# Sign the SOS Plastic Bottle Ban Petition!

Help us put an end to single-use plastic bottles and protect our  
Monterey Bay!

<https://saveourshores.org/plastic-bottle-petition/>





The winner is.....

**Congrats to our  
Watershed Trivia  
Champion!**





# Thanks for playing!

We hope to **sea** you at our next trivia event!

